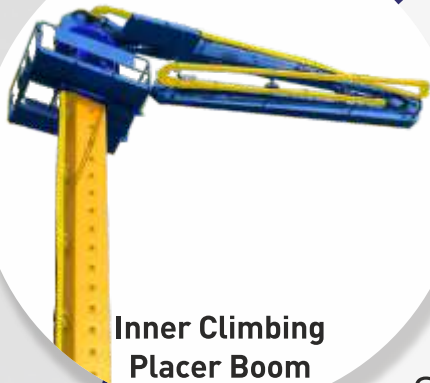


**FLEXIBLE, RELIABLE  
& VALUE FOR MONEY**

**HERCULES**  
*Elevating Efficiency & Performance*

**SPARTAN'S HERCULES SERIES OF EFFICIENT  
CONCRETE PLACER BOOMS**

- Boom make of high quality wear resistant material STREX 700MC.
- Various Jib length models to suit your budget.
- Wide range for inner climbing Boom Placers from 14 mtrs. to 36 mtrs.
- Suitable for multiple applications for infrastructure and realty projects.
- Easy assembly & dismantling through pin type joints.
- Saves 60% more time as compared to conventional concreting.
- Assured ROI within 12 months.
- Warranty of 2 Years.



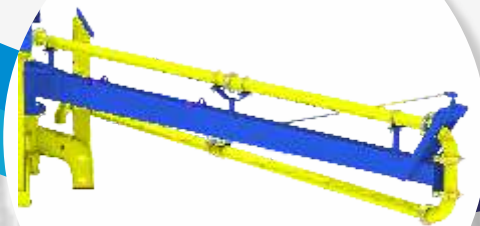
**Inner Climbing  
Placer Boom**



**Stationary Leg Mounted  
Placer Boom**



**Crawler type  
Placer Boom**



**Mechanical Concrete  
Distributor**

Spartan gives you value for money with its flexible and reliable boom placers. Concrete distribution is systematic with the right quality concrete pump. Spartan boom placers give high productivity through reduced segregation of aggregates in concrete with higher strength mix at a steady rate. These placer booms require less labour which provides uniform concrete placement in wall, columns and deck forms.

**Available Models:**

**Inner Climbing Placer Boom**

SPB 14I / SPB 18I / SPB 18R3I / SPB 24I / SPB 32R3 / SPB 36Z4

**Stationary Leg Mounted Placer Boom**

SPB 14S / SPB 18S / SPB 18R3S

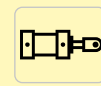
**Crawler Type Placer Boom**

SPB 18Z4C

**Mechanical Concrete Distributor**

SPB 12M





Hydraulic



Inner Climbing



Leg Mounted



Wireless Remote

# HERCULES

*Elevating Efficiency & Performance*

## STATIONARY PLACER BOOMS

SPB 36Z4 | SPB 32R3 | SPB 18R3S | SPB 18R3I

### SPECIAL FEATURES

#### Boom Materials



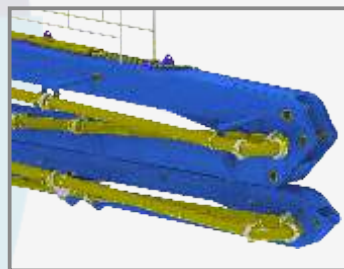
Boom make is of high quality wear resistant material STREX 700MC grade.

#### Safety Platform



Safety Platform is provided for additional safety during maintenance and assembly.

#### Wear Resistant Pipeline



Pipes made of is special wear resistant material - ST52 for longer life

#### Slewing Mechanism



Slewing mechanism with slewing ring, made of high strength material is provided for long service life.

#### Wireless Remote Control



Wireless Remote control having 100 mtr. range is provided for easy convenient and safe operation.

#### Double Hydraulic Jacks for Lifting



The presence of two hydraulic lifting jacks ensure that the boom lifting process proceeds smoothly. Unlike in the case of single jack where the boom weight causes bending forces to jam the jack.

#### Detachable Boom Design



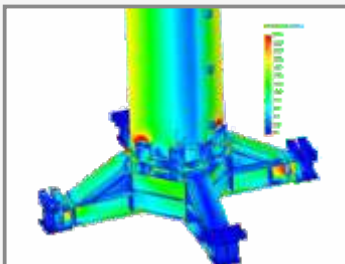
Detachable Boom Design distributes weight in multiple modules resulting in reduced module weight for easy & faster erection, dismantling through low capacity tower crane.

#### Snap Coupling at Pipe Joint



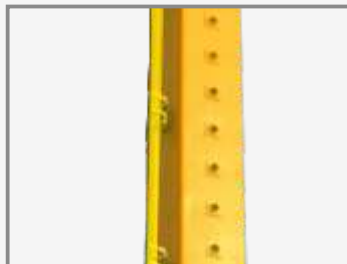
Reliable and heavy duty snap coupling at pipe joints makes pipe dismantling and assembly easy without any need of spanner or any special tool.

#### Safe & Sturdy Structure



Entire structure of machine has been designed on basis of FEA study by considering various loading conditions to ensure the life , reliability and safety.

#### Robust Mast Design



Mast is made of high strength square tube material which gives stability during operation.

#### Control Panel



CE standard control panel confirms sustain ability of electrical panel & it's component as per international standard which results in zero breakdown.

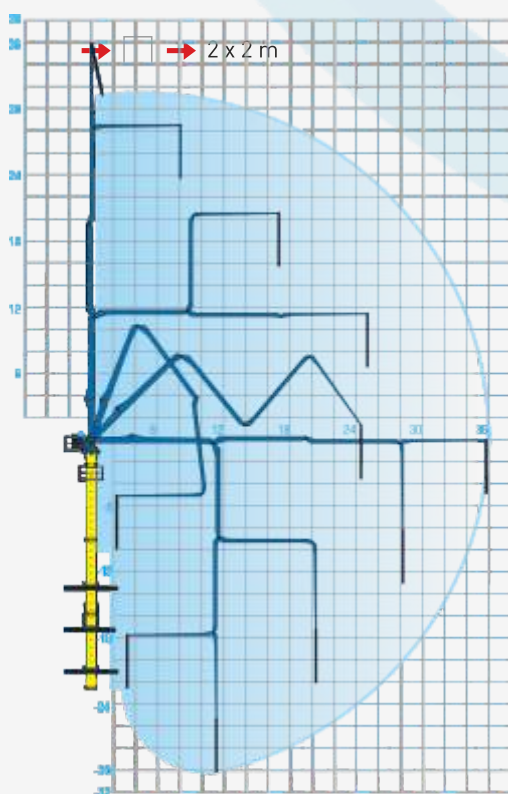
#### Easy & Fast Assembly



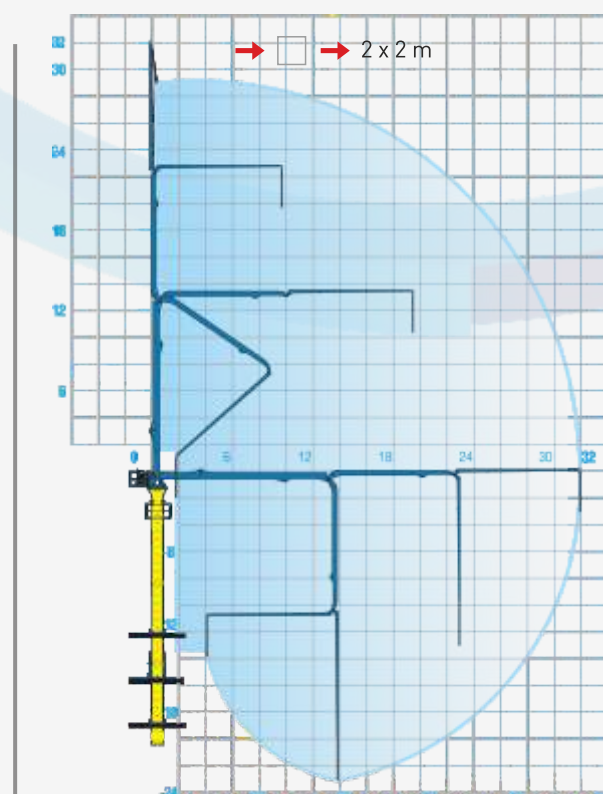
The modules of placing boom are joined through pins which enabled easy and fast assembly & dismantling.

# TECHNICAL SPECIFICATIONS

Features	Description	SPB 36Z4	SPB 32R3
Performance	Max. Radius of Placing Boom (mtr.)	36	32
	Max. Height Working Reach (mtr.)	20.7	20.7
	Slewing Range (°)	400 max	400 max
	Total Weight	20700 Kgs.	17840 Kgs.
	Counter Weight (Kgs.)	-	-
	Weight of Heaviest Component (Kgs.)	5400 Kgs.	4450 Kgs.
	Electric Power	380V/50Hz	380V/50Hz
Motor	Power	18.5 kW	18.5
Hydraulic System	System Pressure (Mpa)	30	30
	Flow (cm <sup>3</sup> )	22	22
	Oil Tank Capacity (ltr.)	180	160
	Controls	Cable Remote Control	-
		Radio Remote Control	-
	Section of Tubular Column (m x m)	0.85 x 0.85	0.75 x 0.75
Boom	Boom Type	"Z" Type	"R" Type
	Delivery Pipeline Diameter	125 mm	125
	Length of End Hose	4 mtr.	3
	1st Section	Length (mtr.)	10.5 mtr.
		Articulation (°)	0-90°
	2nd Section	Length	8.5 mtr.
		Articulation	0-180°
	3rd Section	Length	8.5 mtr.
		Articulation	0-205°
	4th Section	Length	8.5 mtr.
		Articulation	0-205°
Climbing (optional)	Climbing Type	Hydraulic	Hydraulic
	Internal Climbing Step Distance	600 mm	600 mm
	Floor Frame	Hole Prepared in Floor	
	Slab core cutting (mtr.)	1 mtr. x 1 mtr.	0.95 x 0.95 mtr.



SPB 36Z4

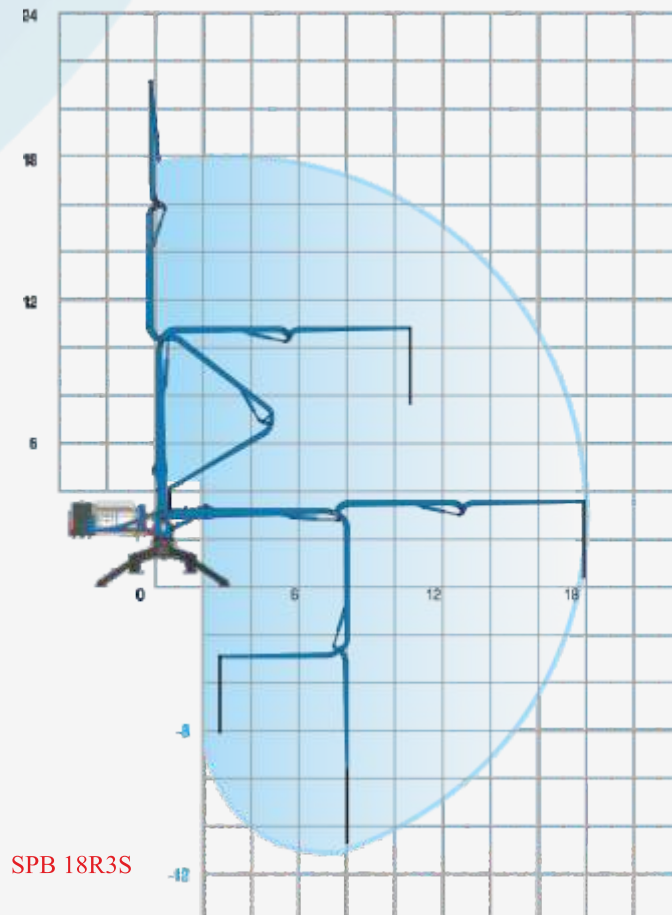


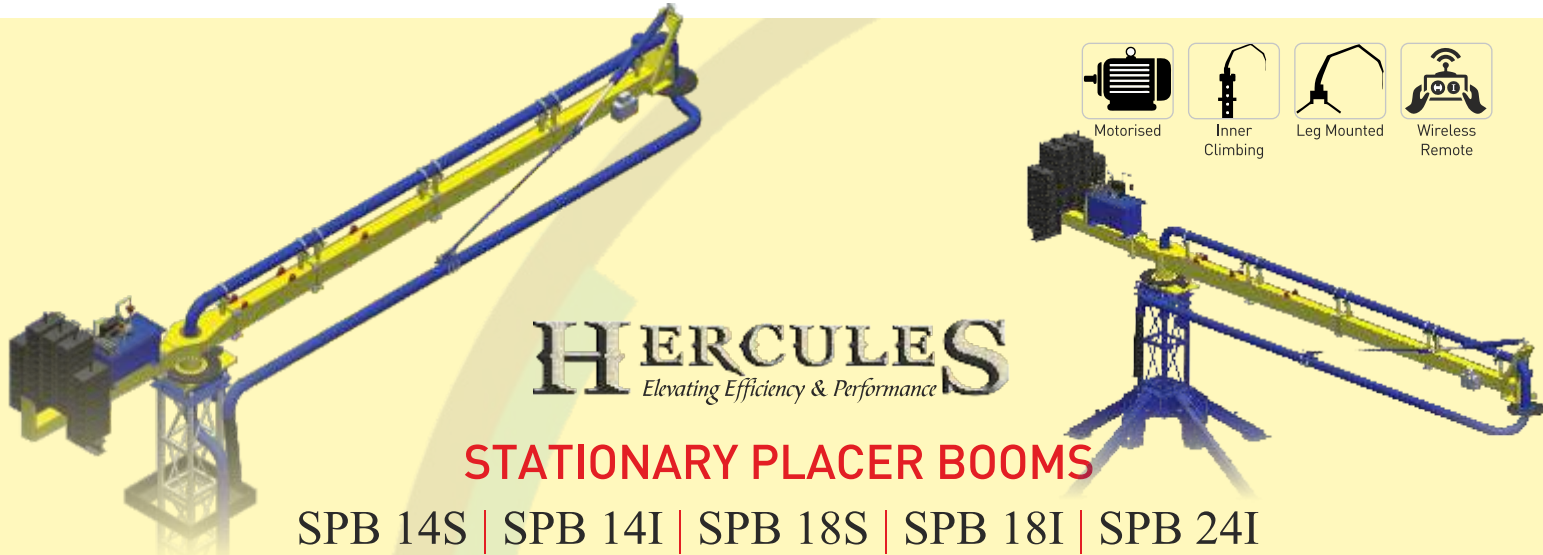
SPB 32R3



## TECHNICAL SPECIFICATIONS

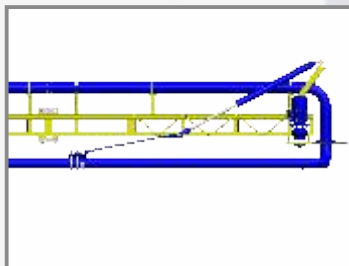
Features	Description		SPB 18R3S	SPB 18R3I
Performance	Max. Radius of Placing Boom		18 mtr.	18 mtr.
	Max. Height Working Reach		20.5 mtr.	38.5 mtr.
	Slewing Range		400° max	400° max
	Total Weight (without counter weight)		4450 Kgs.	7900 Kgs. (with Mast)
	Counter Weight		2700 Kgs.	2700 Kgs.
	Weight of Heaviest Component		1670 Kgs.	1670 Kgs.
	Electric Power		380V/50Hz	380V/50Hz
Motor	Power		7.5 kW	7.5 kW
Hydraulic System	System Pressure		28 Mpa	28 Mpa
	Flow		11 cm3	11 cm3
	Oil Tank Capacity		120 ltr.	120 ltr.
	Controls		Cable Remote Control	Cable Remote Control
			Radio Remote Control	Radio Remote Control
	Section of Tubular Column (optional)		-	1.2 mtr. x 1.2 mtr.
Boom	Boom Type		"R" Type	"R" Type
	Delivery Pipeline Diameter		125 mm	125 mm
	Length of End Hose		3 mtr.	3 mtr.
	1st Section	Length	7.3 mtr.	7.3 mtr.
		Articulation	0° - 87°	0° - 87°
	2nd Section	Length	5.4 mtr.	5.4 mtr.
		Articulation	0° - 180°	0° - 180°
	3rd Section	Length	5.3 mtr.	5.3 mtr.
		Articulation	0° - 180°	0° - 180°
Climbing (optional)	Climbing Type		Hydraulic	
	Internal Climbing Step Distance		-	600 mm
	Floor Frame		Hole Prepared in Floor	-
	Slab Core cutting			1.4 mtr.x 1.4 mtr.





## SPECIAL FEATURES

### Wear Resistant Pipeline



Pipes are made of special wear resistant material - ST52 for longer life

### Energy Efficient Motors



The motors are IE2 class, which are energy efficiency increase low running cost.

### Completed Motorized Operation



This has motorized slewing movement of main pipe boom for easy and effortless concreting.

### Control Panel



CE standard control panel confirms sustainability of electrical panel & its components as per international standard Which results in zero breakdown.

### Surface Treatment



All components go through 7 tank process followed by high quality powder coating which increases the structure's life & prevents corrosion. This also sustains concrete contact.

### Wireless Remote Control



Wireless Remote control having 100 mtr. range is provided for easy convenient and safe operation.

### Detachable Boom Design



Detachable Boom Design distributes weight in multiple modules resulting in reduced module weight for easy & faster erection, dismantling through low capacity tower crane.

### Snap Coupling at Pipe Joint



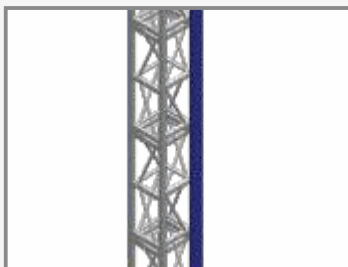
Reliable and heavy duty snap coupling at pipe joints makes pipe dismantling and assembly easy no need of spanner or any special tool.

### Easy & Fast Assembly & Dismantling



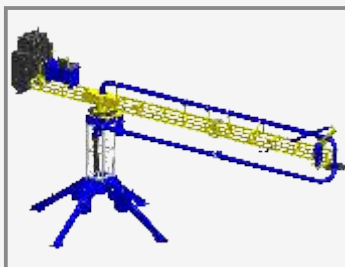
The modules of placing boom are joined through pins which enabled easy and fast assembly & dismantling.

### Robust Mast Design



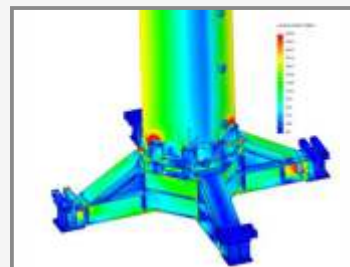
Mast is made of high strength square tube material which gives stability during operation.

### Light Weight Structure



The total weight of boom placer is the lowest in its class, due to which load on building structure is less and also required low capacity crane during erection.

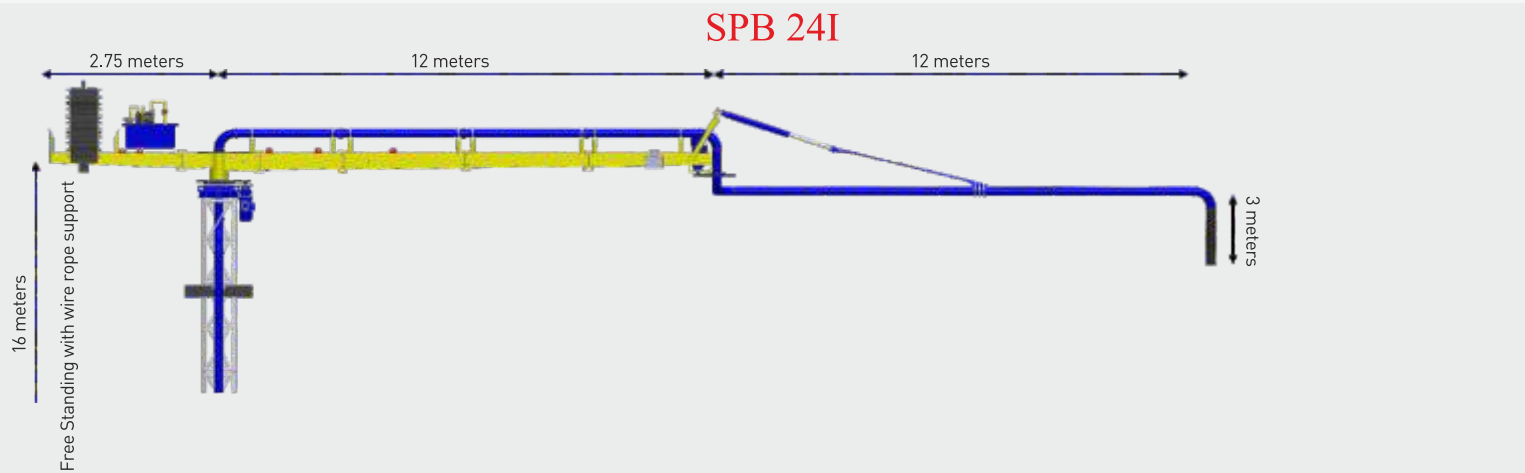
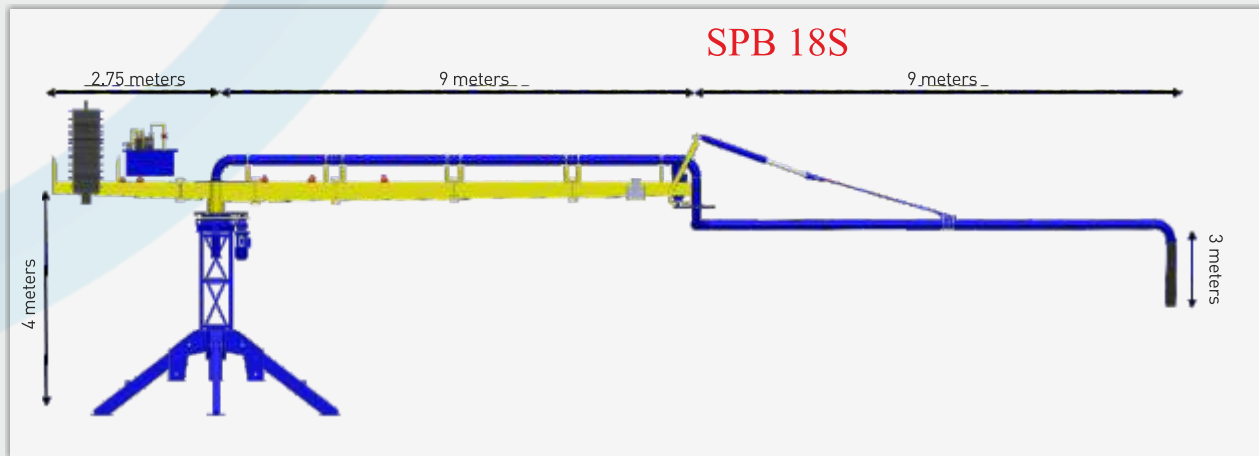
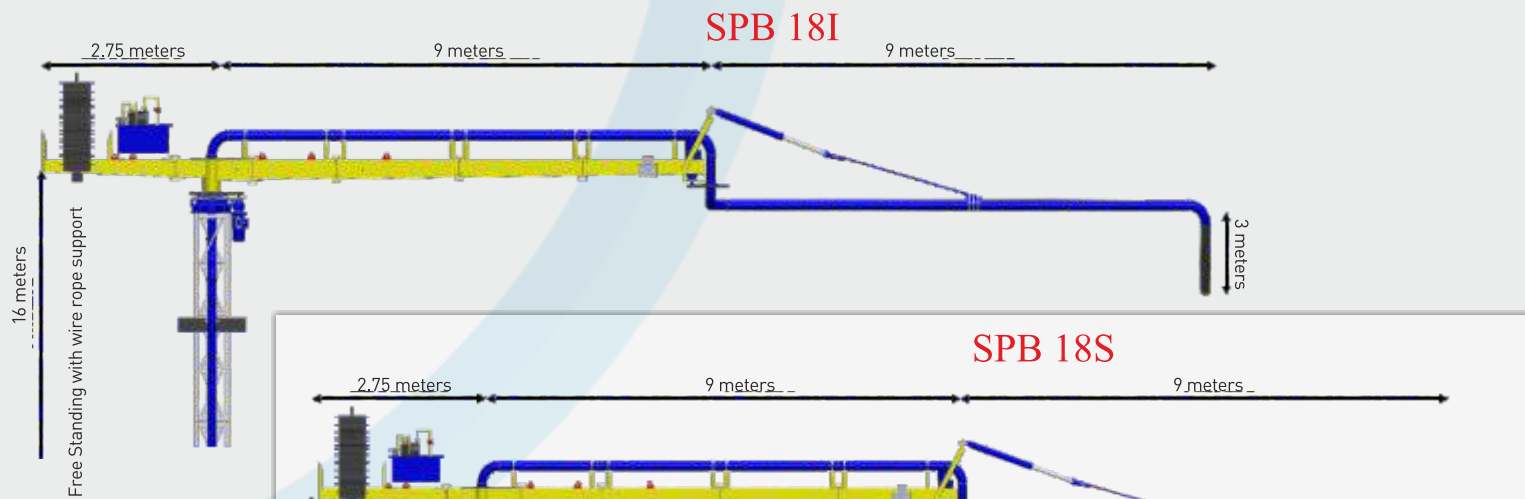
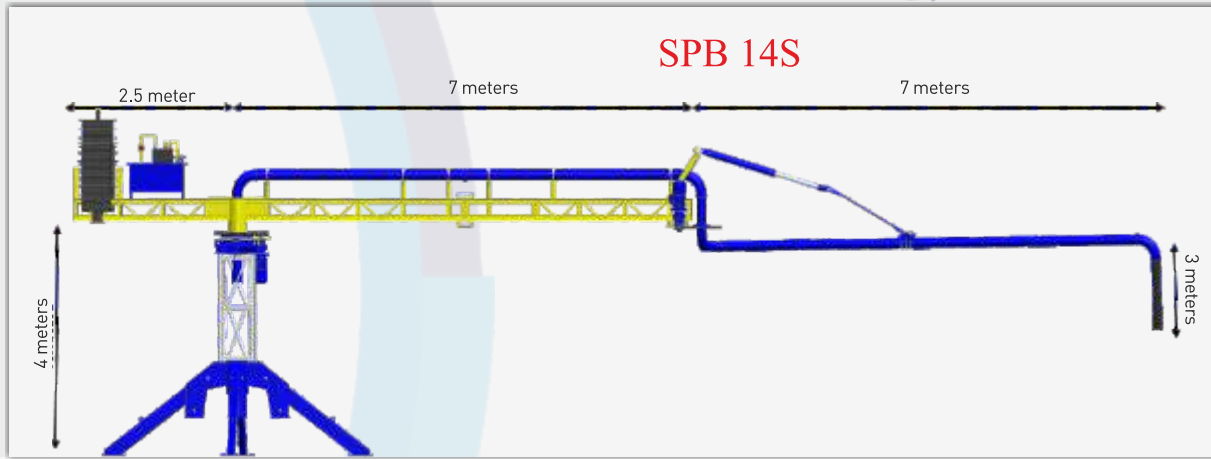
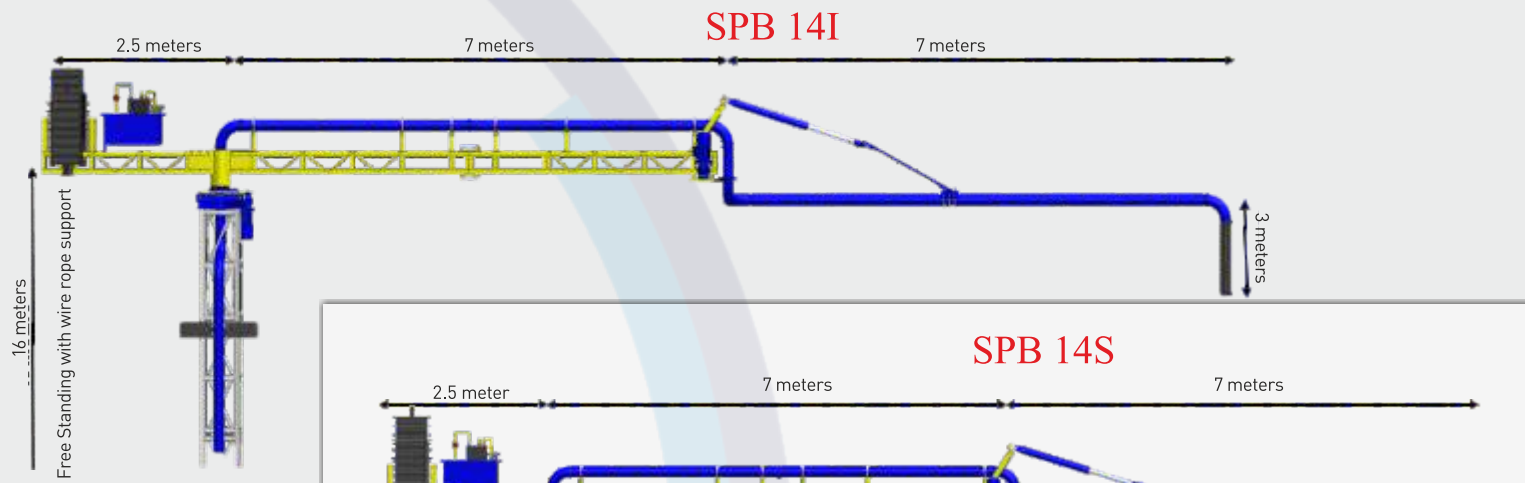
### Safe & Sturdy Structure

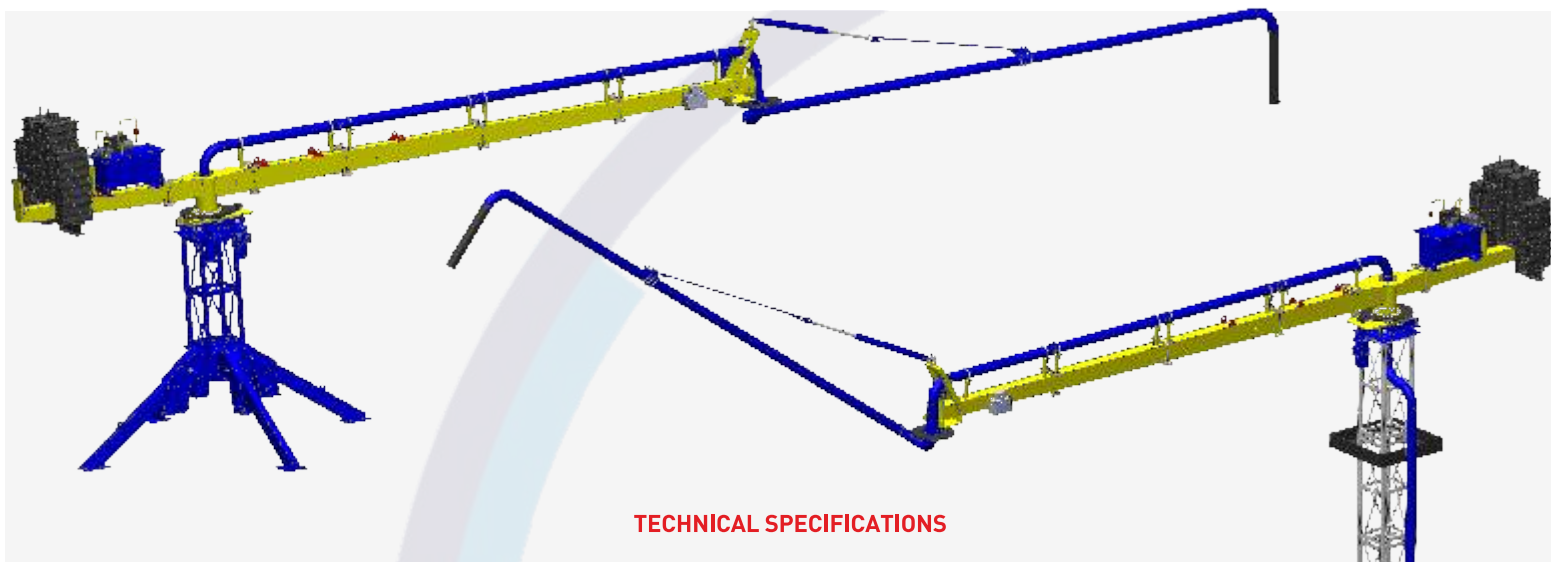


Entire structure of machine has been designed on the basis of FEA study by considering various loading conditions to ensure the life, reliability and safety.



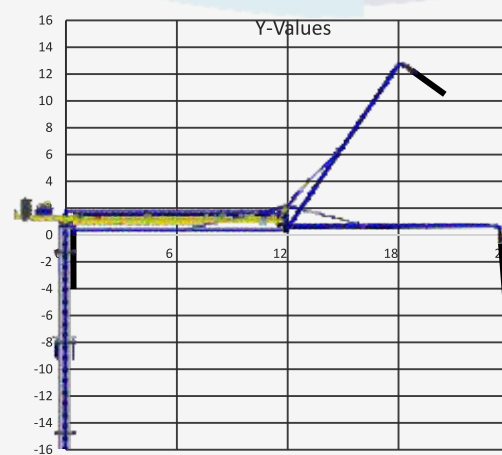
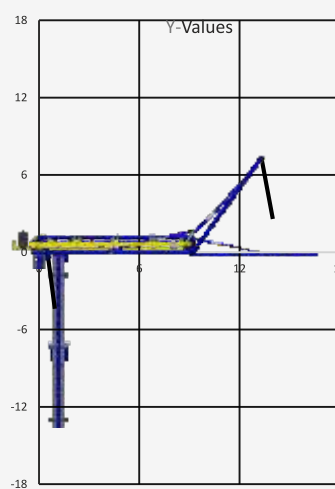
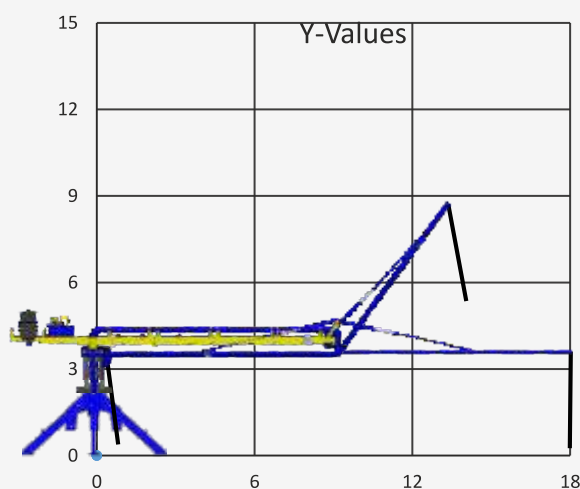
## GENERAL DIMENSION OF BOOM PLACER



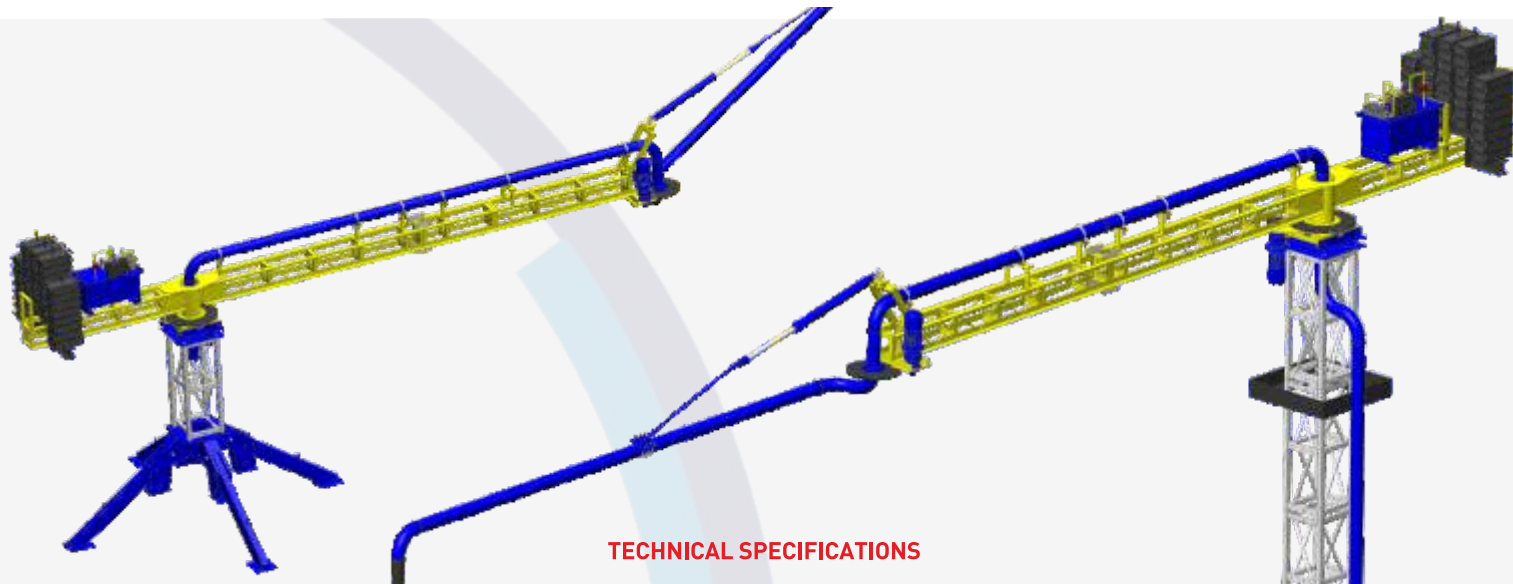


### TECHNICAL SPECIFICATIONS

Model No.	SPB 18S	SPB 18I	SPB 24I
Description	Spartan Placer Boom		
Max. Radius of Placing Boom	18 mtrs.	18 mtrs.	24 mtrs.
Arms	2 arms	2 arms	2 arms
Free Standing Height	4 mtr.	16 mtr.	16 mtr.
Mast Set Options	-	500 x 500 mm.	650 x 650 mm.
Mast Type	-	Square Mast	Square Mast
Slewing Range (°)	360°	360°	360°
Total weight (kgs.) Without counter weight	4000 kgs.	4500 kgs. (with Mast)	7200 kgs. (with Mast)
Heaviest Single Piece	350 kgs.	350 kgs.	400 kgs.
Counter Weight	2700 kgs.	2700 kgs.	3800 kgs.
Control Systems	Auto (Motorised)	Auto (Motorised)	Auto (Motorised)
Pipeline Diameter	125 mm	125 mm	125 mm
Delivery length of end Hose	3 mtr.	3 mtr.	3 mtr.
Boom 1 <sup>st</sup> section	Length	9 mtr.	12 mtr.
Boom 2 <sup>nd</sup> section (Pipe)	Length	9 mtr.	12 mtr.
Climbing Type	-	Hydraulic	Hydraulic
Internal Climbing Step Distance	-	600 mm	600 mm
Floor Frame	-	Hole Prepared in Floor	Hole Prepared in Floor
Slab Core Cutting	-	0.70 mtr x 0.70 mtr	0.85 mtr x 0.85 mtr
Max. Working Reach	19 meters	24 meters	29 meters
Main Boom Rotating motor	3 HP	3 HP	3 HP
Pipe Boom Rotating motor	2 HP	2 HP	2 HP
Pipe Jacking Motor – (power pack)	1 HP	1 HP	1 HP

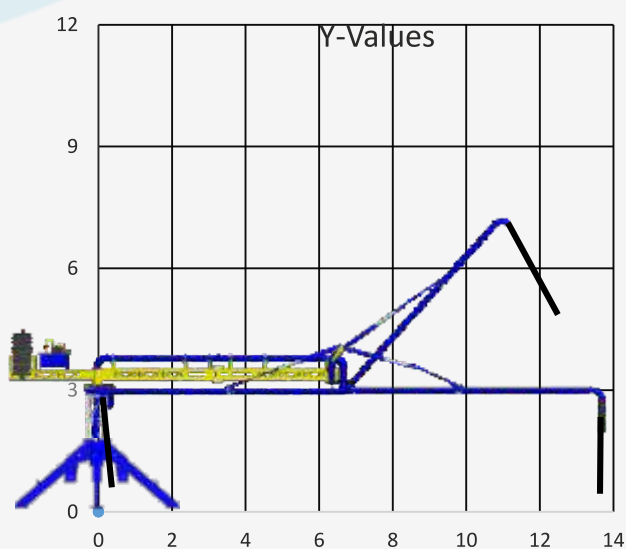




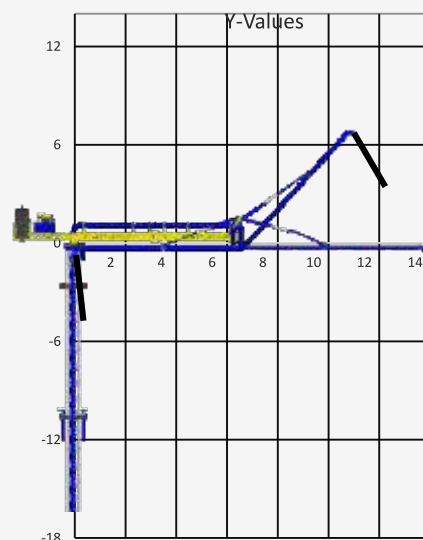


### TECHNICAL SPECIFICATIONS

Model No.		SPB 14S		SPB 14I	
Description		Spartan Placer Boom			
Max. Radius of Placing Boom		14 mtrs.		14 mtrs.	
Arms		2 arms		2 arms	
Free Standing Height		4 mtr.		16 mtr.	
Mast Set Options		-		500 x 500 mm.	
Mast Type		-		Square Mast	
Slewing Range [° ]		360°		360°	
Total weight (kgs.) without counter weight		3200 kgs.		3600 kgs. (with Mast)	
Heaviest Single Piece		200 kgs.		200 kgs.	
Counter Weight		2100 kgs.		2100 kgs.	
Control Systems		Auto (Motorised)		Auto (Motorised)	
Pipeline Diameter		125 mm		125 mm	
Delivery length of end Hose		3 mtr.		3 mtr.	
Boom 1 <sup>st</sup> section	Length	7 mtr.		7 mtr.	
Boom 2 <sup>nd</sup> section (Pipe)	Length	7 mtr.		7 mtr.	
Climbing Type		-		Hydraulic	
Internal Climbing Step Distance		-		600 mm	
Floor Frame		-		Hole Prepared in Floor	
Slab Core Cutting		-		0.70 mtr x 0.70 mtr	
Max. Working Reach		8 meters		22 meters	
Main Boom Rotating motor		3 HP		3 HP	
Pipe Boom Rotating motor		2 HP		2 HP	
Pipe Jacking Motor – (power pack)		1 HP		1 HP	



SPB 14S



SPB 14I



Hydraulic



Crawler



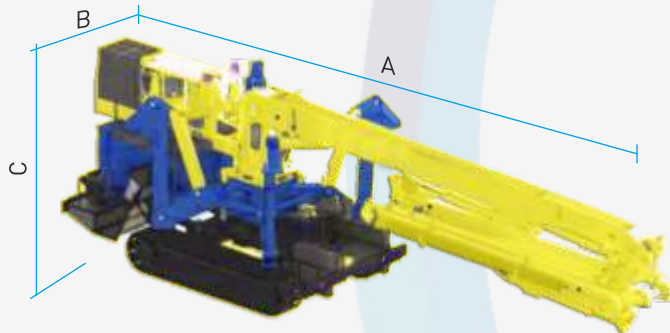
Wireless  
Remote

# HERCULES

*Elevating Efficiency & Performance*

## CRAWLER TYPE PLACER BOOM

### SPB 18Z4C



Dimensions (cm) A 930 | B 230 | C 260  
Transport Weight (11150 kg)



Low Unfolding  
Height

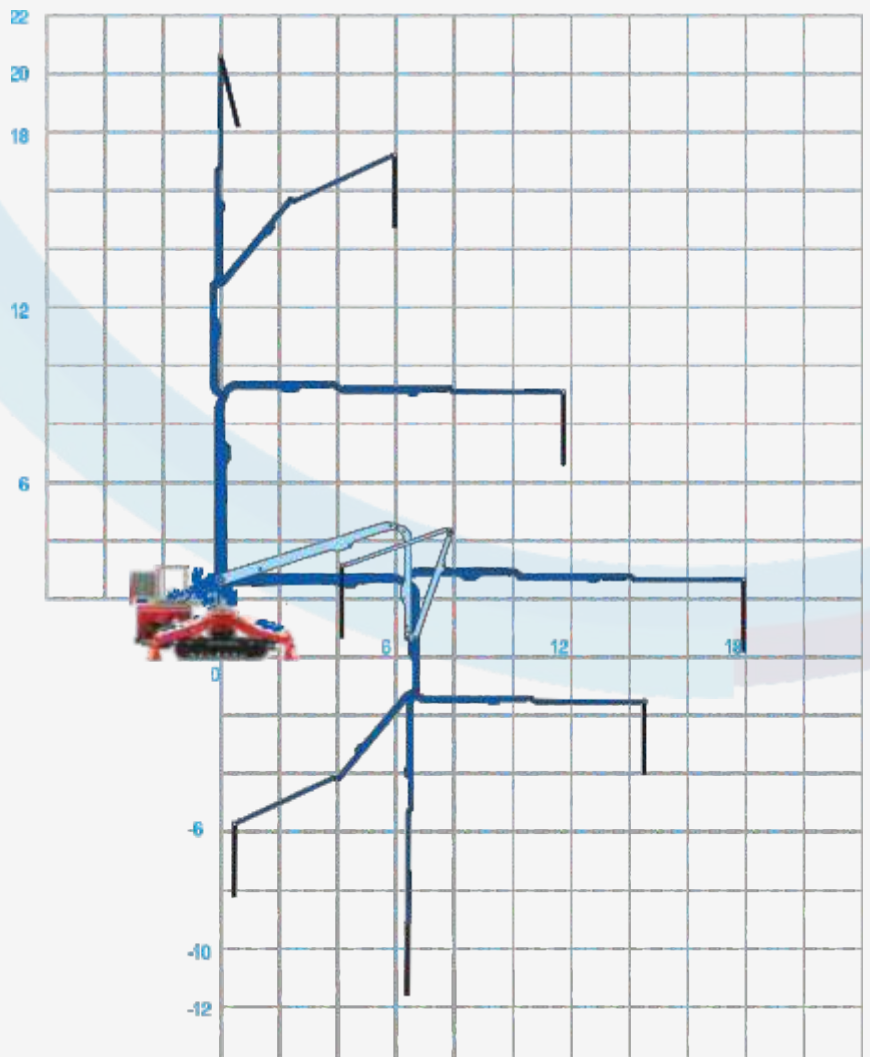
#### Weight

Crawler:	4050 kg
Boom Section:	3630 kg
Leg Set:	1070 kg
Counterweight:	2400 kg
	11150 kg +

\* Diesel power pack / 400 kg

\*\* Gasoline power pack / 185 kg

\*Specifications are subject to change without notice

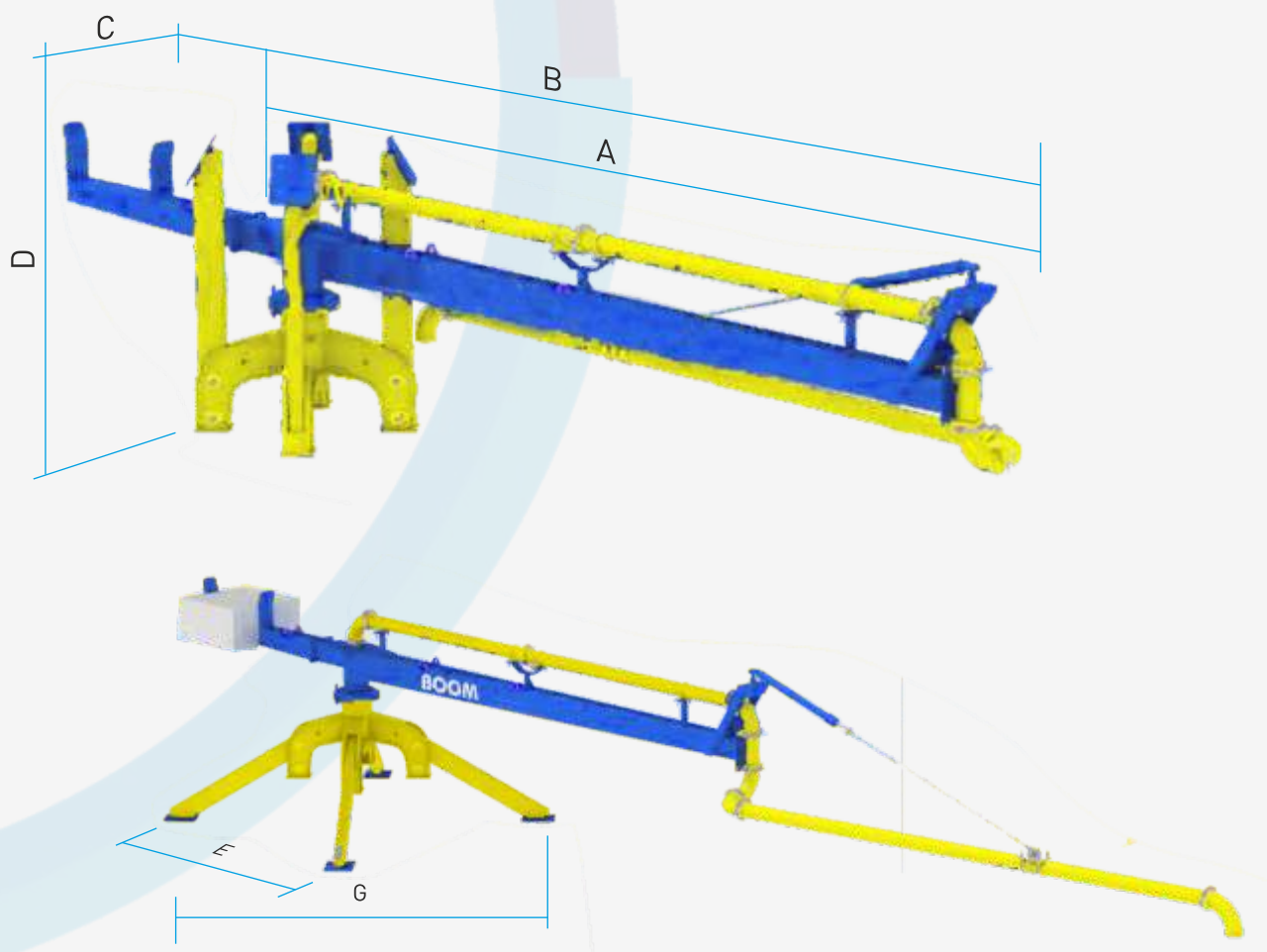


→ □ → 2 x 2 m



## MANUAL CONCRETE DISTRIBUTOR

SPB 12M



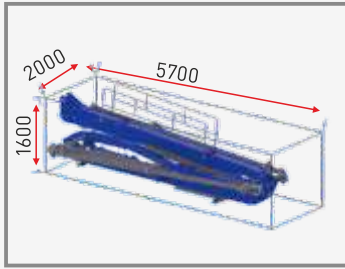
### TECHNICAL SPECIFICATIONS

	Dimensions						Weight (Kg)			Max. Radius of Placing Boom (m)
	A	B	C	D	E	F	Boom Section	Counter	Leg Set	
SPB 12M	675	885	103	210	290	400	1450	1100	500	12

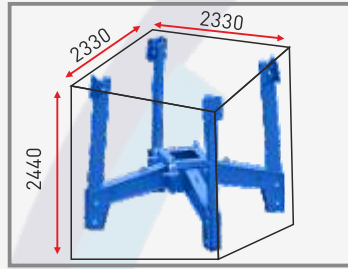
# INSTALLATIONS PROCEDURE FOR STATIONARY LEG MOUNTED PLACER BOOM

## WEIGHT & SIZES OF SEGMENTS

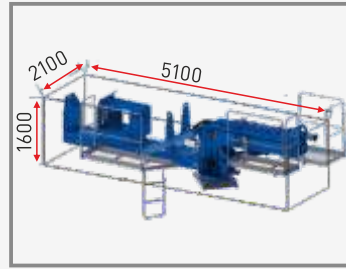
Boom Section (1670 kg)



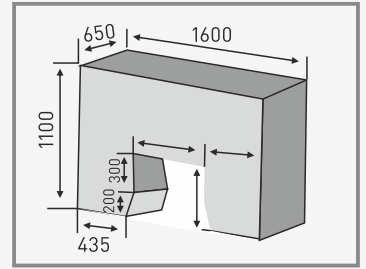
Leg Set (1150 kg)



Ballast Beam & Main Boom (1630 kg)

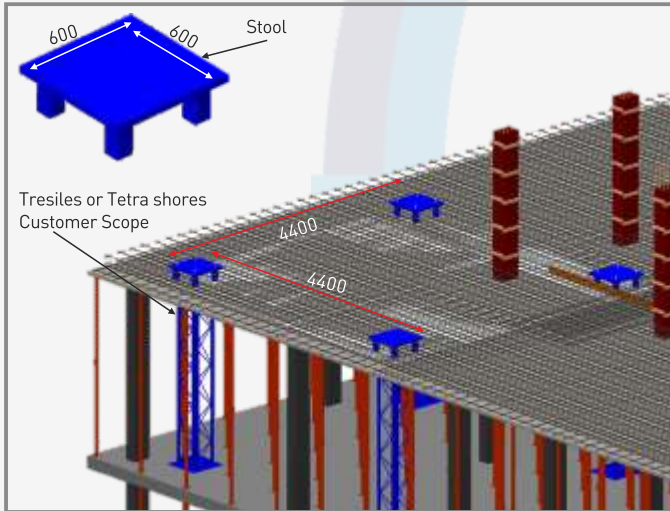


Counter Weight (2700kg)



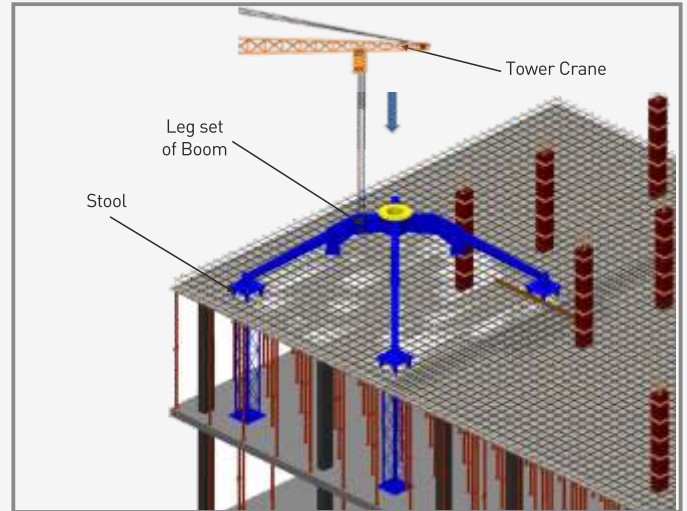
## INSTALLATION PROCEDURE

Step - 1



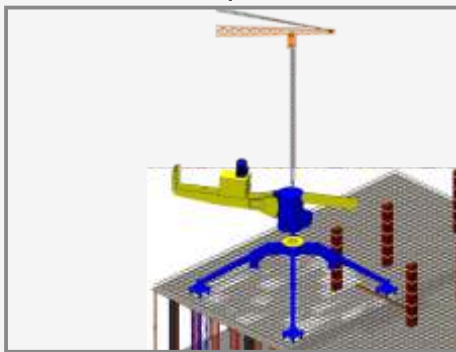
- Mount 4 nos. tetra shores on slab below shuttering.
- Mount 'C' channel frame arrangement on shores.
- Place shuttering on this supporting frame.
- Mount 4 nos. stool on shuttering as shown in fig.

Step - 2



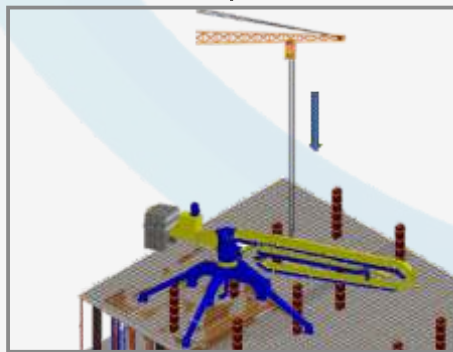
Place leg set on stool with help of tower crane as shown in fig.

Step - 3



Place Ballast Beam & Main boom on leg set as shown in below fig. with help of tower crane

Step - 4



Join Main boom & boom section with pin joint shown in below fig. with help of tower crane

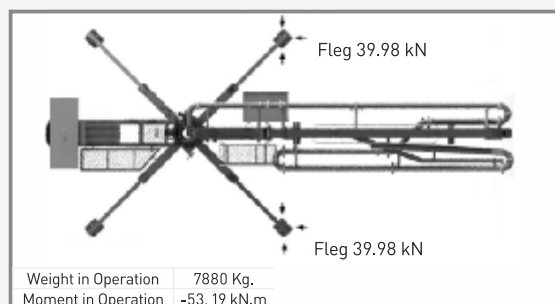
Step - 5



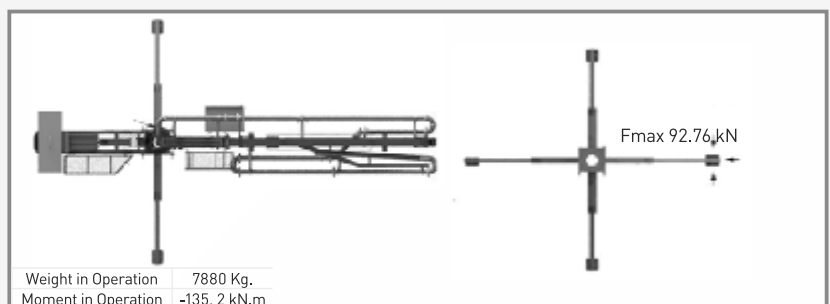
Place counter weight 2700 kg on ballast beam as shown in fig with help of tower crane

## LOAD REACTION ON SHUTTERING

(X) Position



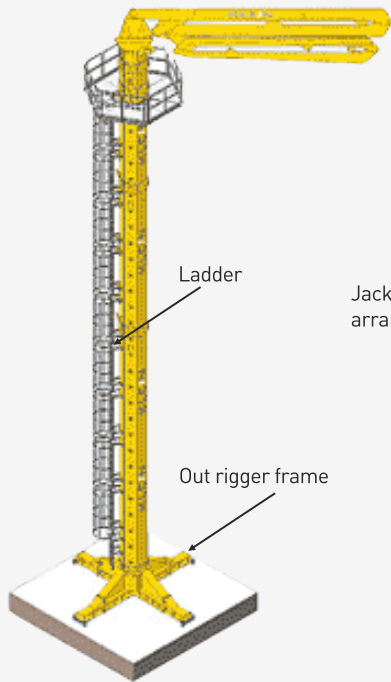
(+) Position



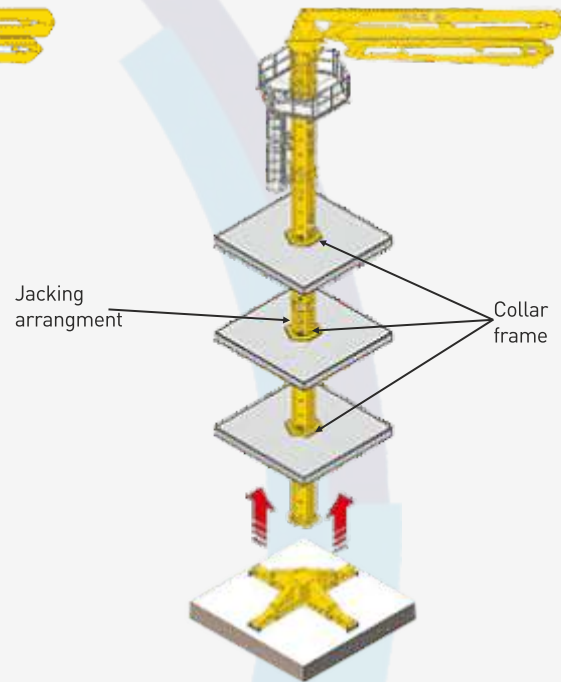


## INSTALLATION TYPE FOR TOWER MOUNTED PLACER BOOM

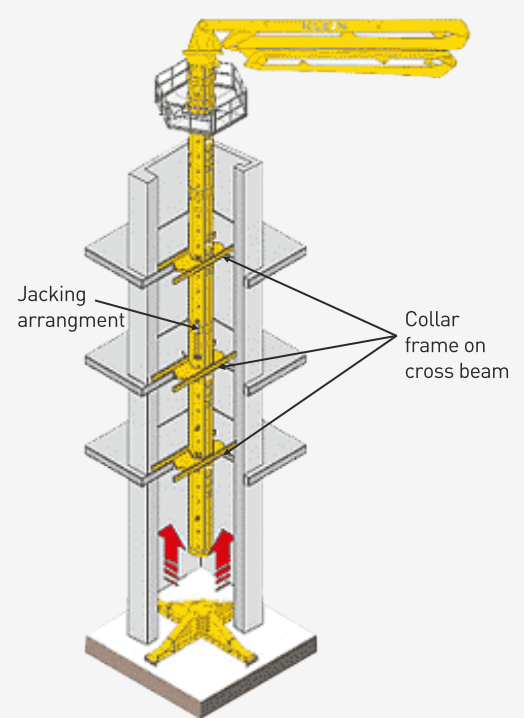
FREE STANDING INSTALLATION



SLAB SUPPORTED INSTALLATION

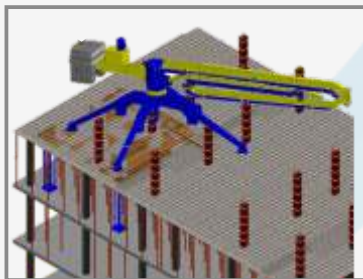


LIFT SHAFT INSTALLATION

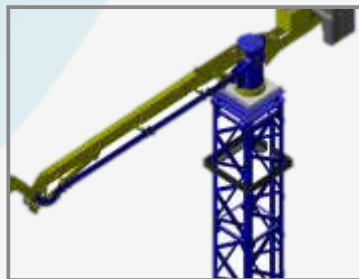


## MOUNTING OPTIONS FOR STATIONARY CONCRETE PLACING BOOM

Mounting on Shuttering with Leg set



Mounting on Tower Crane Mast



Free Standing



Slab Supported (Internal Climbing)



In lift shaft (Internal Climbing)





Dr Vikram Mehta,  
Managing Director  
Manufacturing.

Spartan Engineering Industries Pvt. Ltd was founded in the year 1971 and has forayed in to the field of manufacturing and supplying construction equipment in the year 2005. Since its four decades of existence in Engineering Industry, Spartan has become a leading Indian MNC in construction Equipment

Machines, Light construction Equipment, Reversible Mixer, Concrete Vibrators & Boom Placers.

Spartan has played a pivotal role in the development of nation by providing machineries to infrastructure projects. The projects range from roads, flyovers, bridges, buildings, houses to dams & tunnels. Creating quality construction equipment helps build reliable infrastructure, drives development & thus fuels the Nation's progress. Thus Spartan has achieved the distinction of being India's most preferred and fastest growing construction equipment manufacturing



State-Of-The-Art Infrastructure (Mumbai - Nashik Highway)

## Vision & Mission

### CORE PURPOSE

To Enhance the Productivity, Speed and Safety in Construction and Infrastructure Industry by providing Advanced Mechanized Solutions, thereby saving their Money, Time and Efforts.

### CORE VALUES

- Passion for Perfection and Innovation.
- Employee Growth Through Continuous Self Improvement.
- Building Strong Relationship with Internal and External Customers.

### ASPIRATIONAL CORE VALUES

- Customer Service Above All Else.
- Always Telling The Truth.
- Contributing Back To The Ecosystem At Large.

### BRAND PROMISE

Committed Fast Response to Build Close Relationship with the entire Eco-System!

## Research & Design Development



Spartan's Design & Development team consists of 20+ dedicated professionals with expertise in Engineering Design & Development.

Our design team uses SolidWorks for 3d solid model

design, static & dynamic analysis Finite Element Analysis (FEA) of machine components & documentation.

This ensures strength & reliability of all components & thereby gives the customer peace of mind.

Our Design Engineers study the structural, static & dynamic Load requirement, load deflection characteristics & working Conditions of the end application. Entire structure of machine has been designed on basis of FEA study by considering various loading conditions to ensure the life, reliability and safety.



## Customer Care

- We have well trained team of technicians having 10-20 years of rich hands-on experience with leading construction companies.
- We have experts from both mechanical & electrical background at each location to serve the customers 24x7.
- We have an in-house training facility to impart training on safe usage and maintenance of machines to our engineers and operators.
- Our ERP backed Call Management System App. with dedicated service co-ordinators at National & Regional level ensure timely response to customer calls.
- We also have dedicated Toll Free Number for our esteemed customers Support & In-house Training.



Customer Care Mobile App.



Customer Care Team- Chennai



Customer Care Team- Delhi



Customer Care Team- Hyderabad

## MILESTONES & AWARDS



'Innovation Award 2019'  
Category: Vehicles & Ancillary Equipment  
Fire India 2019 Expo, New Delhi



India's Small Giant 'Top SME 30 Award'  
by Shri. Kalraj Mishra,  
Hon'ble Union Cabinet Minister



'Top SME 100 Award'  
by SME Chamber of Commerce



'Excellence In Operations Award'  
by 'Manufacturing Today'  
for our Factory



'Best Success Story Award' of  
'Entrepreneur Gurukul'  
from SMM- ART Consultancy



'Best Success Story Award' of  
'Entrepreneur Gurukul'  
from SMM- ART Consultancy



'Best Success Story Award' of  
'Entrepreneur Gurukul'  
from SMM- ART Consultancy



'Best Success Story Award' of  
'Entrepreneur Gurukul'  
from SMM- ART Consultancy



'Power Building Brands Awards'  
for 'Machineries & Equipment'  
by Realty Plus



'Sarvottam Manufacturer of Rebar Cut &  
Bend Machines & Suspended Platforms'  
by Builders Association of India (BAI)



'Best Success Story Award' of  
'Entrepreneur Gurukul'  
from SMM- ART Consultancy



'MD of the Year Innovative Building &  
Construction Equipments' by  
Global Real Estate Congress & ET NOW



'Business Excellence Award'  
presented to Dr. Vikram Mehta from '  
All India Business Association'



'India's Greatest Brands 2017-18  
Pride of the nation Award' by Asia One &  
PWC (Pricewaterhouse Coopers)



'Brand of the Year  
in Plant & Construction Machinery'  
By Realty+



"Top 200 MSMEs in India"  
by Skoch Group



'Innovation Case Study  
Golden Trophy Award for IoT of  
Rack & Pinion Hoists



'Merit Award' - Best Team  
in Quality Concepts - Day 2



'Innovation Case Study Winner Award'  
by Quality Circle Forum of India  
Mumbai Chapter



'Kobetsu Kaizen - Golden Trophy Award'  
for Reduce time on Wire Rope Winding  
- Rope Suspended Platform



'Great Entrepreneur of India Award'  
By 'Indian Organisation  
for Commerce & Industry' New Delhi



'Young Indian Entrepreneurs 2018-19'  
Award by AsiaOne and  
Pricewaterhouse Coopers (PWC)



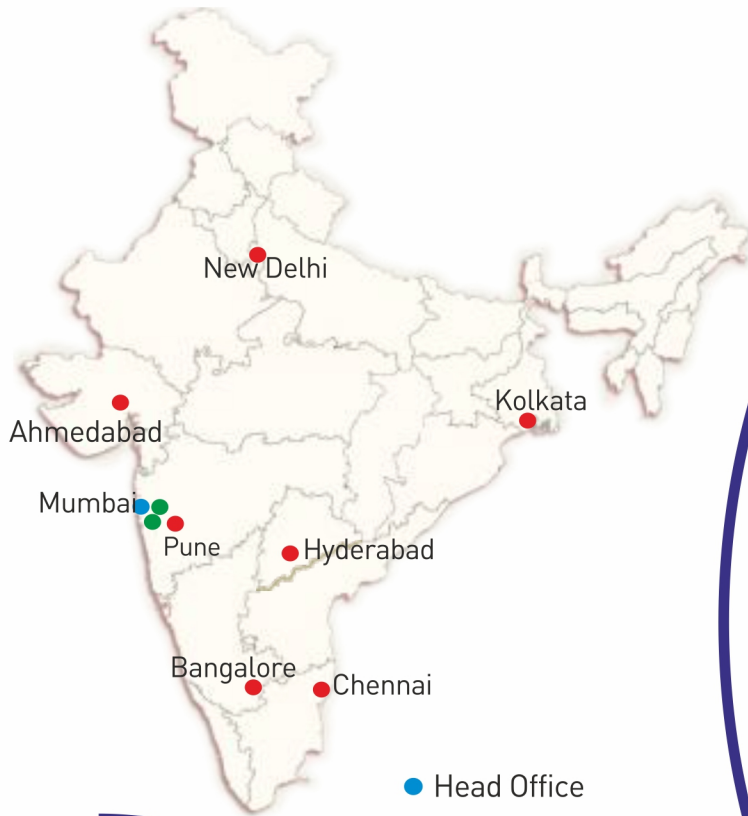
'Outstanding Company in MHEs  
(Material Handling Equipments)'  
by EPC World



'Innovative Product Design of the  
Year Award' for Firemen Evacuation Lift



# NEAR YOU! EVERYWHERE!



- Head Office
- Branch Office
- Factory



**TOLL FREE**

**1800 3000 0150**

Spares, Service & Product Enquiry

Email:

**espartan@spartanindia.com**



Scan for  
Spartan Website



Scan for Enquiry  
on Email



Scan for  
Toll Free No.:  
1800 3000 0150



Scan for  
Spartan's  
LinkedIn Page



Scan for  
Spartan's  
Facebook Page



Scan for  
Spartan's  
Youtube Videos



**CUSTOMER  
CARE SERVICE**



**CUSTOMER  
DELIGHT**



**PREVENTIVE  
MAINTENANCE  
CLINICS (PMC)**



**ANNUAL  
MAINTENANCE  
CONTRACTS (AMC)**



**ONSITE  
TRAINING &  
DEVELOPMENT**



**GENUINE  
SPARE PARTS**



## SPARTAN ENGINEERING INDUSTRIES PVT. LTD.

Head Office: Spartan House, Unit No.: 111, 1st Flr., New Tejpal Industrial Estate, Andheri - Kurla Road, Sakinaka, Mumbai - 400072 | Tel.: +91 22 4055 0000 | Email: [espartan@spartanindia.com](mailto:espartan@spartanindia.com)

Branch Offices: Mumbai | New Delhi | Bangalore | Hyderabad | Chennai | Kolkata | Pune | Ahmedabad

[www.spartanindia.com](http://www.spartanindia.com)